

effineo™

Refine your curves

SLIM  
NESS

NATbeauty™

### Market opportunities

Cellulite represents a burden for women.

Cellulite is characterized by adipose tissue hypertrophy (hypodermis) combined with localized lymphatic retention.

The main remedies for this condition are a healthy diet and physical exercise, though **some benefits may be achieved through the use of lymphatic drainage products (limitation of water retention) and lipolysis stimulators (fat elimination).**



### Adipocytes, lipid stores in the hypodermis

The fat in adipocytes (adipose tissue cells in which fat accumulates) occurs in the form of triglycerides (TG), compounds formed by the esterification of fatty acids on glycerol. Fatty acids are conveyed by blood, in association with lipoproteins and can be captured by adipose tissue when the biological messages tend towards storage. Conversely, if required by the body, the lipids are broken down and the non-esterified fatty acids (NEFA) are released by the adipocytes.

**The amount of fat contained inside an adipocyte is governed by two antagonistic phenomena: lipogenesis and lipolysis.**

Among other means of controlling the manifestations of fat accumulation in the hypodermis, one can slow lipogenesis, or stimulate lipolysis.

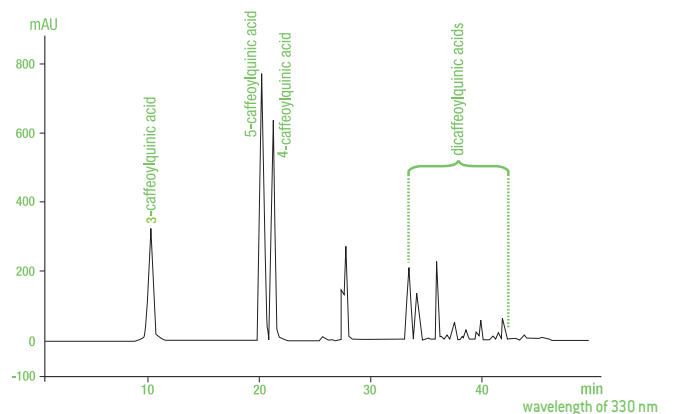


Human adipocytes

### Premium characteristics

Naturex research has developed Effineo™, a caffeine-free green coffee extract, and **has successfully demonstrated its significant impact on the transformation of adipocyte triglycerides to free fatty acids, available to the body as an energy source.**

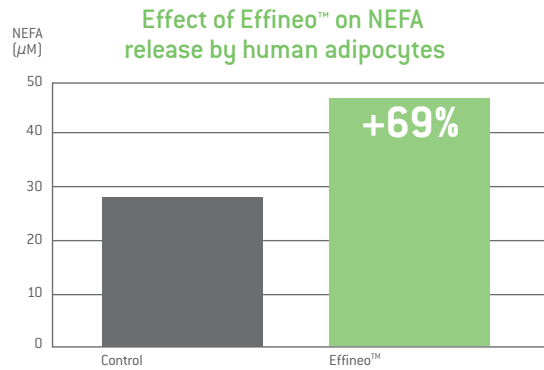
### HPLC



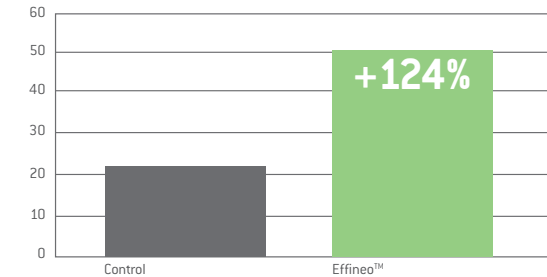
## Effineo™'s action

### Action of Effineo™ on adipocytes

124% increase in the release of non-esterified fatty acids (NEFA)

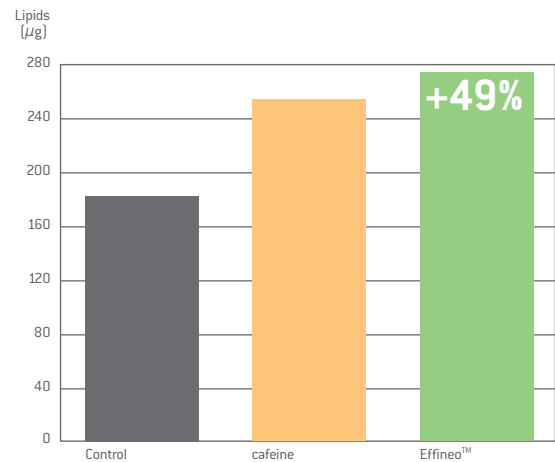


Effect of Effineo™ on NEFA release by human adipose tissue explants



49% increase in triglycerides (TG) release

Effect of Effineo™ on TG release by human adipose tissue explants

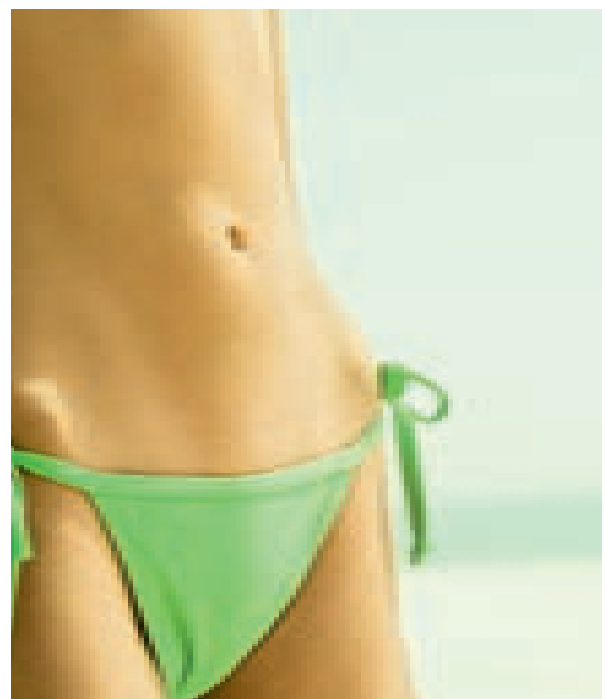


Release of lipids from adipocytes

Reduction of adipocytes diameter

### Effineo™ can be used:

- To contribute to weight management, in complement to a balanced diet.
- To control localized cellulite and to limit orange-skin effect.
- To re-mobilize lipids and to promote lipolysis.



## Food & Beverage

A business unit specializing in the development of natural flavoring, coloring, preservative and healthy ingredients that are tailored for food and beverage applications.



## Nutrition & Health

A business unit specializing in the development of botanical extracts and branded ingredient concepts backed by scientific studies for nutraceutical applications and plant extracts for pharmaceutical products.



## Personal Care

A business unit specializing in the development of natural ingredient concepts supported with biological studies, botanical extracts and functional raw materials for cosmetic applications.



EUROPE - GLOBAL HEADQUARTERS  
**Phone 33 (0)4 90 23 96 89**  
E-mail: naturex@naturex.com

ASIA/PACIFIC - REGIONAL OFFICE  
**Phone 65 6536 5168**  
E-mail: naturex.asia@naturex.com

THE AMERICAS - US HEADQUARTERS  
**Phone 1 201 440 5000**  
E-mail: naturex@naturex.us

[www.naturex.com](http://www.naturex.com)

CHINA  
**Phone 86 21 649 645 11**  
E-mail: naturex.cn@naturex.com

ITALY  
**Phone 39 02 460927**  
E-mail: naturex.it@naturex.com

BENELUX  
**Phone 32 2 761 23 70**  
E-mail: naturex.benelux@naturex.com

GERMANY  
**Phone 49 (0) 228/854-268 0**  
E-mail: naturex.de@naturex.com

UK  
**Phone 44 1865 512 030**  
E-mail: naturex.uk@naturex.com